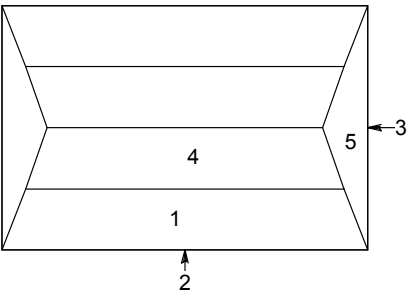
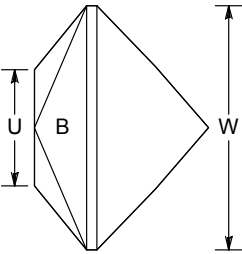
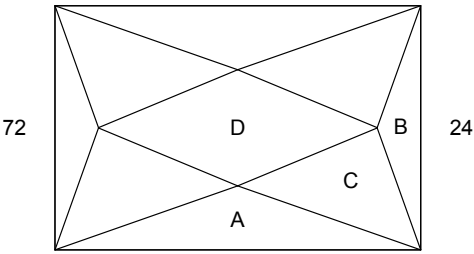
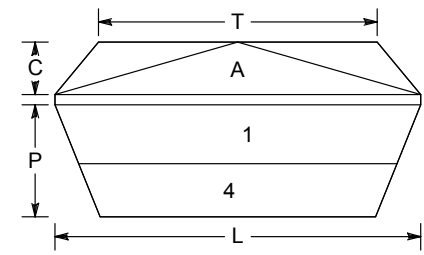


60 48 36



84 <96> 12



Beginner Tourm

by Michiko Huynh (December 2009)
Angles for R.I. = 1.540
15 + 4 girdles = 19 facets
2-fold, mirror-image symmetry
96 index
L/W = 1.500 T/W = 1.144 U/W = 0.476
P/W = 0.459 C/W = 0.214
Vol./W³ = 0.580

PAVILION

| | | | |
|---|--------|-------|----------------------|
| 1 | 44.00° | 96-48 | |
| 2 | 90.00° | 96-48 | Cutting distance 1 |
| 3 | 90.00° | 24-72 | Cutting distance 1.5 |
| 4 | 41.00° | 96-48 | |
| 5 | 68.00° | 24-72 | |

CROWN

| | | |
|---|--------|-------------|
| A | 39.20° | 96-48 |
| B | 50.20° | 24-72 |
| C | 22.00° | 06-42-54-90 |
| D | 0.00° | Table |

C:\Users\Khai\Desktop\GEMCAD~1\MYORIG~1\RECTAN~2.GEM